

HiveManager enables policy creation, firmware upgrades, config updates, and centralized monitoring from one console

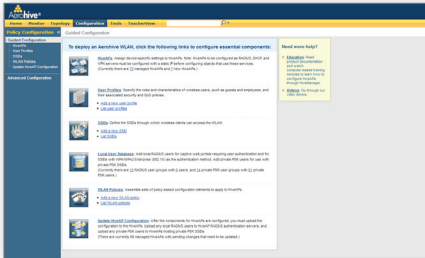
# HiveManager 4.0

## Network Management System

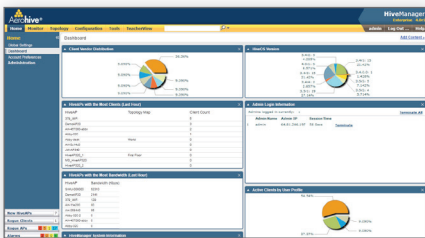
AEROHIVE NETWORKS HIVEMANAGER NMS is a management system for Aerohive HiveAPs. HiveManager enables simple policy creation, firmware upgrades, configuration updates, and centralized monitoring from a single console.

The Aerohive WLAN system combines an Enterprise-class access point with a suite of cooperative control protocols and functions to provide all of the benefits of a controller-based WLAN solution, but without requiring a controller or an overlay network. A hive of HiveAPs is able to operate independently; however, to provide for global policy management and centralized configuration and monitoring of many HiveAPs, HiveManager provides a centralized management instance for the entire wireless network. HiveManager lowers operating costs by speeding deployment, configuration, and monitoring of the wireless network. The HiveAPs are fully functional even when disconnected from the HiveManager.

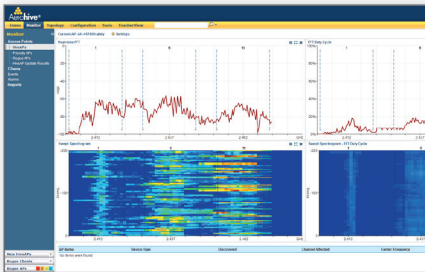
HiveManager is accessible via a web browser on Windows, Linux, or Mac OS X, providing an application-like AJAX interface with which to access the device. With advanced features like zero-configuration deployment and virtual HiveManagers, HiveManager offers market-leading features, segmentation, and ease of use.



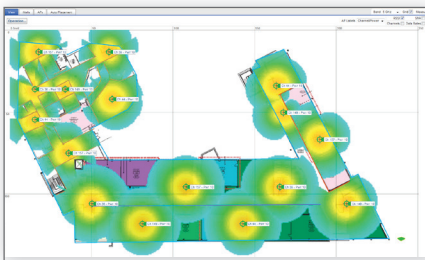
Easy guided configuration.



Dashboard enables real time monitoring.



Spectrum analysis for troubleshooting.



Planner optimizes AP placement.

Product	Maximum APs	Max. Virtual HiveManager	Hard Drive	Power Supply
HiveManager	500	5	Single	Single
HiveManager High-Capacity	5000	500	RAID 1 Redundancy	Redundant
HiveManager Virtual Appliance	1500*	500	n/a**	n/a**

\*Based on VMware hardware specifications \*\*Based on host platform's hardware configuration.

**Contact us today** to learn how your organization can benefit from an Aerohive wireless LAN architecture.

## Physical Specifications

### HiveManager Device Specifications

- Form factor: 1U rack-mountable device
- Chassis dimensions: 16 13/16" W x 1 3/4" H x 15 13/16" D (42.7 cm W x 4.4 cm H x 40.2 cm D)
- Weight: 13.75 lb. (6.24 kg)
- Serial port: male DB-9 RS-232 port (bits per second: 9600, data bits: 8, parity: none, stop bits: 1, flow control: none)
- USB port: standard Type A USB 2.0 port
- Two Ethernet ports: MGT and LAN – autosensing 10/100/1000Base-T

### Power Specifications

- ATX (Advanced Technology Extended) autoswitching power supply with PFC (power factor corrector):
  - Input: 100 – 240 VAC
  - Output: 250 watts
- Power supply cord: standard three conductor SVT 18AWG cord with an NEMA5-15P three-prong male plug and three-pin socket

### Environmental Specifications

- Operating temperature: 32 to 140°F (0 to 40°C)
- Storage temperature: -4 to 176°F (-20 to 80°C)
- Relative humidity: 10% – 90% (noncondensing)

### VMWare Specifications

Host Platform Minimum Hardware:

- Processor: Dual Core 2GHz or Better
- Memory: 2GB dedicated to the VM, at least 1GB dedicated to the host
- Disk: Min. of 10GB dedicated to VM
- VMware may impose additional requirements

Tested Virtualization Platforms

- ESXi 4.0 or better
- Player on CentOS
- Player on Windows Vista

### HiveManager High-Capacity Device Specifications

- Form factor: 2U rack-mountable device
- Chassis dimensions: 16 13/16" W x 3 1/2" H x 17" D (42.7 cm W x 8.9 cm H x 43.2 cm D)
- Weight: 34 lb. (15.42 kg) without rails
- Serial port: male DB-9 RS-232 port (bits per second: 9600, data bits: 8, parity: none, stop bits: 1, flow control: none)
- Two USB ports: standard Type A USB 2.0 ports
- Two Ethernet ports: MGT and LAN – autosensing 10/100/1000Base-T

### POWER SPECIFICATIONS

- Redundant ATX (Advanced Technology Extended) autoswitching power supply with PFC (power factor corrector):
  - Input: 100 – 240 VAC
  - Output: 700 watts
- Power supply cord: standard three conductor SVT 18AWG cord with an NEMA5-15P three-prong male plug and three-pin socket

### ENVIRONMENTAL SPECIFICATIONS

- Operating temperature: 32 to 140°F (0 to 40°C)
- Storage temperature: -4 to 176°F (-20 to 80°C)
- Relative humidity: 10% – 90% (noncondensing)

## Product Features of HiveOS 4.0r1

### Easy Administration

- Appliance or VMware virtual appliance-based management platform can be installed into the network in minutes
- Three HiveManager appliance options scaling up to 5000 APs
- Supports 100 concurrent administrators through the web-based administration GUI
- Can be configured to run in the streamlined “Express” mode or the more advanced “Enterprise” mode
- Web-based administration with AJAX support for easy browser-based access combined with application-style interaction
- Customizable dashboard and reporting interface

### Simple Central Management

- Single central management instance for thousands of HiveAPs
- User group policies can be applied network wide or granularly to individual HiveAPs
- Powerful policy templating feature enables updates to the entire groups of HiveAPs with a few clicks
- Simple centralized firmware upgrades with distributed download functionality to decrease WAN utilization and download time

### RF Visualization

- Network maps enable easy visualization of topology and status
- Real-time heat-maps show RF propagation within a network.
- State-of-the-art Planning Tool with multi-floor auto-placement and coverage maps
- Built-in client and rogue location detection and placement on a floorplan
- Spectrum analysis to detect and identify typical non WiFi sources of interference at either 2.4GHz or 5GHz

### HiveManager Virtualization

- Provides the ability to run multiple virtual HiveManagers on a single HiveManager appliance
- Virtual HiveManagers enable complete separation of administration for large enterprises, managed services, and multi-tenant environments
- Supports up to 500 virtual HiveManagers

### Zero Config Installation HiveAP Deployment

- APs can automatically discover their HiveManager on the same subnet or use DNS, DHCP or the Aerohive Staging server to find a HiveManager anywhere in the world
- Automatically provision or quarantine new APs

### High Availability

- Disaster recovery high availability support with automated database synchronization,
- Designed to work across multiple sites and/or data centers

### Granular Control

- Detailed user-based policy for QoS and security features such as VPN, Firewall, and schedules
- TeacherView Cart Application included to monitor and redirect student wireless clients during class time

### Reporting and Monitoring

- Real-time monitoring of alarms and events from the APs
- Configuration audit capabilities ensure all configurations are up to date
- Central collection and alerts of rogue and external APs and Clients

### Hardware Options

- Redundant hard drive and power supply options

SKU	Description
<b>HiveManager</b>	
AH-HM-VA	HiveManager NMS Virtual Appliance with included 3 VHM licenses, 0 HiveAP licenses VMware ESX or Player
AH-HM-NR-1U	HiveManager (1U) NMS Appliance with included 3 VHM licenses, 0 HiveAP licenses, non-redundant HDD and power supply
AH-HM-R-2U	High Capacity HiveManager (2U) NMS Appliance with included 3 VHM licenses, 0 HiveAP licenses, redundant HDD and power supply; HA capable
<b>HiveManager Licenses</b>	
AH-HM-LIC-1AP	1 HiveAP license for HiveManager
AH-HM-LIC-1VHM	1 VHM license for HiveManager
AH-HM-LIC-GM	License to enable GuestManager on the HiveManager platform
<b>HiveManager Accessories</b>	
AH-ACC-PWR-HCHM	Spare power supply for HighCapacity HiveManager
AH-ACC-PWR-HM	Spare power supply for HiveManager