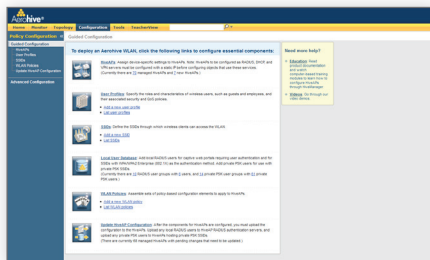


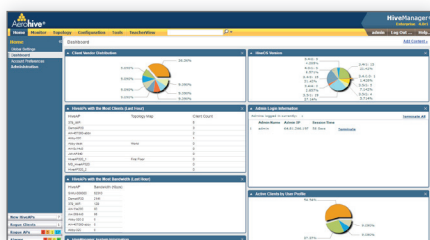
HiveManager Online 4.0

Network Management System

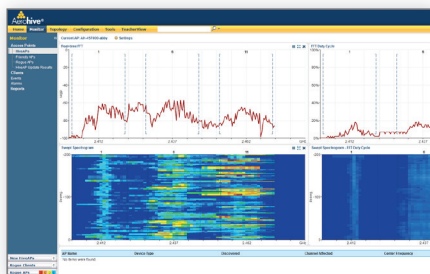
HiveManager Online is an enterprise-class NMS for Aerohive HiveAPs, delivered as a cloud-based service.



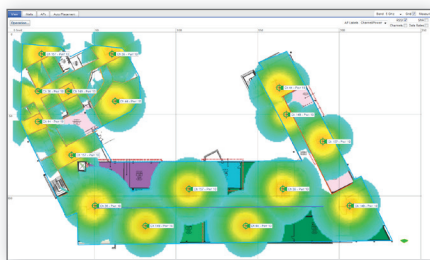
Easy guided configuration.



Dashboard enables real time monitoring.



Spectrum analysis for troubleshooting.



Planner optimizes AP placement.

Aerohive Networks, Inc.

330 Gibraltar Drive
Sunnyvale, California 94089 USA
phone 408.510.6100
toll-free 866.918.9918
fax 408.510.6199
www.aerohive.com

AEROHIVE NETWORKS HIVEMANAGER ONLINE NMS is an enterprise-class management system for Aerohive HiveAPs, delivered as a cloud-based service. HiveManager Online offers the same simple policy creation, firmware upgrades, and centralized monitoring options as the stand-alone version of HiveManager¹, however, you don't have to deploy another device in your network. HiveManager Online is hosted within secure Tier IV SAS 70 Type II data centers, with scheduled backups and disaster recovery capabilities.

HiveManager Online is designed to make it cost effective to start small and grow a network with no upfront capital costs beyond the AP. HiveManager Online comes in two versions, Express and Enterprise. Express, designed for smaller deployments, streamlines the interface without compromising enterprise-class features. Enterprise offers the full capabilities of the HiveManager platform for larger organizations with sophisticated policy requirements. HiveManager Online allows administrators to start with Express and seamlessly migrate to Enterprise.

Aerohive Cooperative Control Architecture

The Aerohive WLAN system combines an Enterprise-class access point with a suite of cooperative control protocols and functions to provide all of the benefits of a controller-based WLAN solution, but without requiring a controller or an overlay network. A hive of APs is able to operate independently; however, to provide for global policy management and centralized configuration and monitoring of many HiveAPs, HiveManager provides a centralized management instance for the entire wireless network. HiveManager lowers operating costs by speeding deployment, configuration, and monitoring of the wireless network. Because the HiveAPs are fully functional even when disconnected from the HiveManager Online, the APs continue to provide access to local services even when the Internet connection is down.

HiveManager Online also includes a portal called "MyHive," which provides single sign-on access to Aerohive resources such as HiveManager Online, support forums, and the staging server, which manages and logs HiveAP assignments to HiveManager Online instances. Customers can use their single sign-on to access their own HiveManager Online instance, and our partners can use the MyHive system to keep track of many instances for their end-users.

Features & Benefits

Bringing up a network of HiveAPs is as simple as plugging them in and browsing to the HiveManager Online address. The HiveAPs are pre-provisioned to connect to HiveManager Online using the secure CAPWAP-DTLS protocol which traverses NAT and firewalls. This means that the APs will automatically connect and register with the customer's account in HiveManager Online enabling configuration from any browser. With HiveManager Online, it is possible to bring up a wireless LAN in just a few minutes. HiveManager Online offers other key benefits:

- Plug and play deployment—the administrator just plugs in the APs and browses to the interface
- No appliance to install, configure, upgrade or patch
- Green—no rack space, cooling or power requirements, just power the APs
- Lower cost of entry—Eliminate large upfront CAPEX with flexible OPEX plans
- Integrated tools like a Planner, Packet Capture, Client Tracker enable easy scoping, deployment and troubleshooting without additional expense
- Accessible via a web browser on Windows, Linux, or Mac OS X, providing an application-like interface to manage the device from anywhere.
- **New!** Spectrum analysis to detect and identify typical non WiFi sources of interference at either 2.4GHz or 5GHz

Contact us today to learn how your organization can benefit from an Aerohive wireless LAN architecture.

¹HiveManager Online has all of the Features of the stand-alone HiveManager with the exception of Virtual HiveManager.

Product Features of HiveOS 4.0r1

Easy Administration

- Online management platform can be configured in minutes
- Grows with your deployment; scales from one AP to thousands – cost effectively
- Web-based administration with AJAX support for easy browser-based access combined with application-style interaction
- Single sign-on access via MyHive provides access to HiveManager Online, support forums, and staging server
- Integrated Wi-Fi Planner tool to design AP placement
- Customizable dashboard and reporting interface

Simple Central Management

- Single central management instance for thousands of HiveAPs
- Powerful policy templating feature enables updates to entire groups of HiveAPs with a few clicks
- Simple centralized firmware upgrades with distributed download functionality to decrease WAN utilization and download time
- Network maps enable easy visualization of topology and status

Security and Privacy

- Customer and network data is private and secure
- No customer traffic traverses Aerohive's network

Reliability

- Service is monitored 24x7 with daily offsite backups and a disaster recovery facility
- Hosted in a SAS 70 Type 2, Tier IV data center

Zero Config Installation HiveAP Deployment

- Just plug-in the APs - they automatically connect to the cloud for provisioning
- The staging server redirects APs to the right HiveManager Online account or a customer's on-premise HiveManager

Granular Control

- Detailed user-based policy for QoS and security
- Multiple administrative accounts with granular role-based administration

Reporting and Monitoring

- Configuration audit capabilities ensure all configurations are up to date
- Central collection and alerts of rogue and external APs and clients
- Real-time monitoring of alarms and events from the HiveAPs
- TeacherView Application included to monitor and redirect student wireless clients during class time
- Subscription and support license status summary
- Spectrum analysis to detect and identify typical non WiFi sources of interference.

Features Comparison Chart

FEATURE	EXPRESS	ENTERPRISE
Wi-Fi Alliance certified "WPA2 Enterprise"	Yes	Yes
Full User Policy Configuration	Yes	Yes
Number of Policy Configurations per SSID	1	Up to 64
Multiple VLANs per SSID	Yes ²	Yes
The ability for different SSID sets to be applied to different APs	No	Yes
Full 802.1X Authentication capability with Fast Roaming	Yes	Yes
Authentication against external user authentication database (ie, Active Directory, LDAP, etc)	Yes	Yes
HiveAP RADIUS with Active Directory, LDAP, Open Directory, eDirectory integration	No	Yes
TeacherView Cart	No	Yes

² Assigned via RADIUS attribute

SKU	Description
HiveManager Online Service	
AH-HMOL-EX-1AP-1YR	HiveManager Online Express for 1 AP for 1 year, includes software subscription and customer portal access
AH-HMOL-EX-1AP-3YR	HiveManager Online Express for 1 AP for 3 years, includes software subscription and customer portal access
AH-HMOL-EX-1AP-5YR	HiveManager Online Express for 1 AP for 5 years, includes software subscription and customer portal access
AH-HMOL-1AP-1YR	HiveManager Online Enterprise for 1 AP for 1 year, includes software subscription and customer portal access
AH-HMOL-1AP-3YR	HiveManager Online Enterprise for 1 AP for 3 years, includes software subscription and customer portal access
AH-HMOL-1AP-5YR	HiveManager Online Enterprise for 1 AP for 5 years, includes software subscription and customer portal access
AH-HMOL-1AP-UG-1YR	HiveManager Online upgrade from Express to Enterprise for 1 AP for 1 year, includes software subscription and customer portal access